

8ft Pent Log Cabin Shed Single/Double Door Range[®]

Technical Details



For Queries and Help
please call Product
Support:
01636 858377

PROPRIETARY AND CONFIDENTIALITY

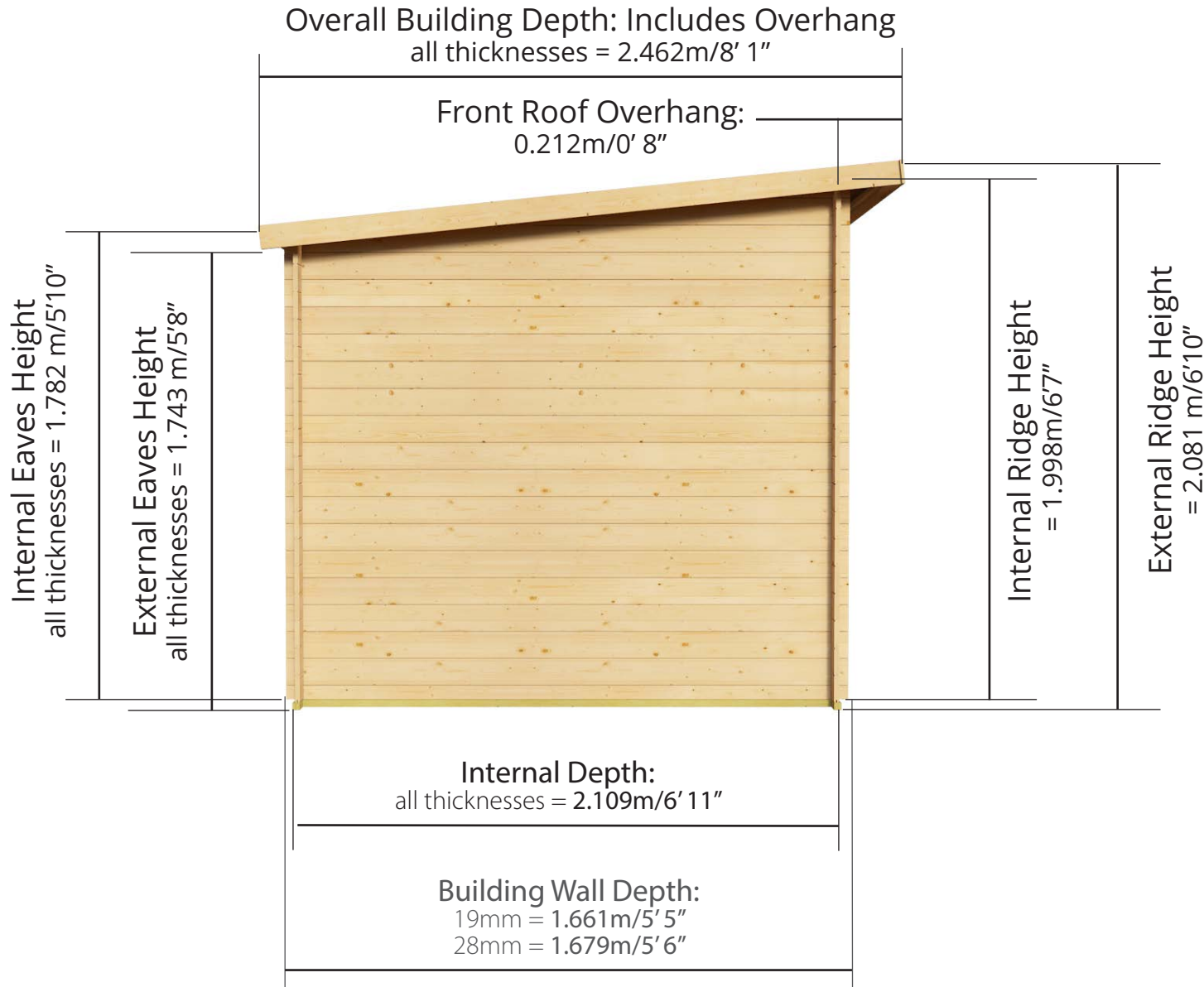
All the information contained within this document including all technical data, dimensions, shape/form and branding (inc. Trademarks, logos, etc.) Is the sole property of Kybotech Limited. The reproduction and/or disclosure to any third party of any information contained within this document is strictly prohibited. Breaches of the copyright will be dealt with on the highest level of severity with immediate legal proceedings.

8ft Pent Log Cabin Shed

Single/Double Door Range

Side elevation: depth 2.462m/8'1"

Sizes available
available in standard 19mm cladding types



Pent Log Cabin Shed
D8ft x W12ft
(Including Overhang)



Pent Log Cabin Shed
D8ft x W10ft
(Including Overhang)

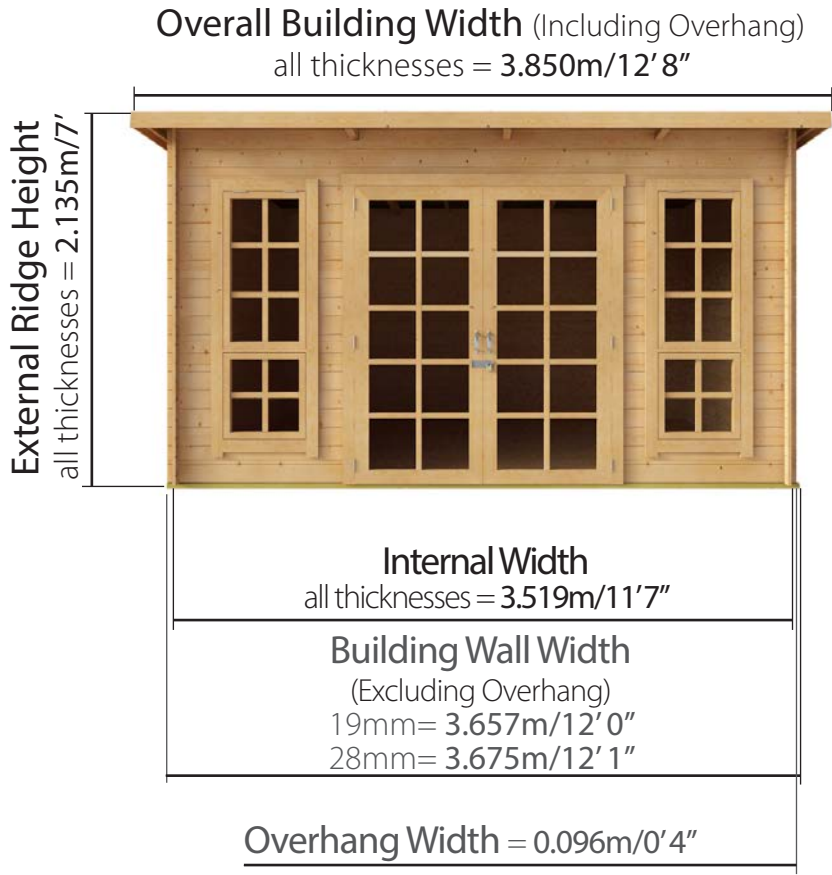


Pent Log Cabin Shed
D8ft x W8ft
(Including Overhang)

D2.46m x W3.85m / D8'1" x W12'8"

Interlocking Windowed Shed:

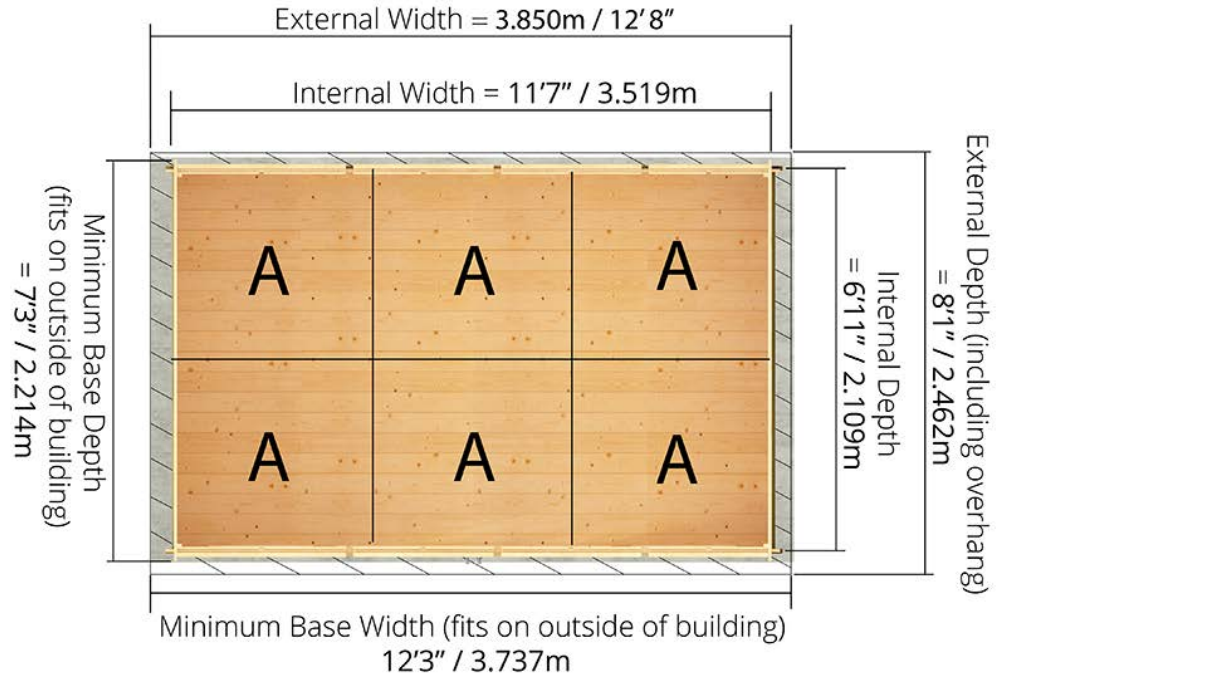
Front elevation



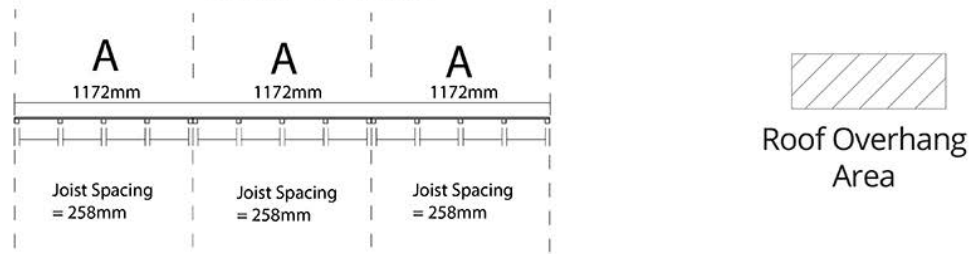
Front of Building

Floor Plan

12x8 Floor Plan - With Floor



Floor Profile

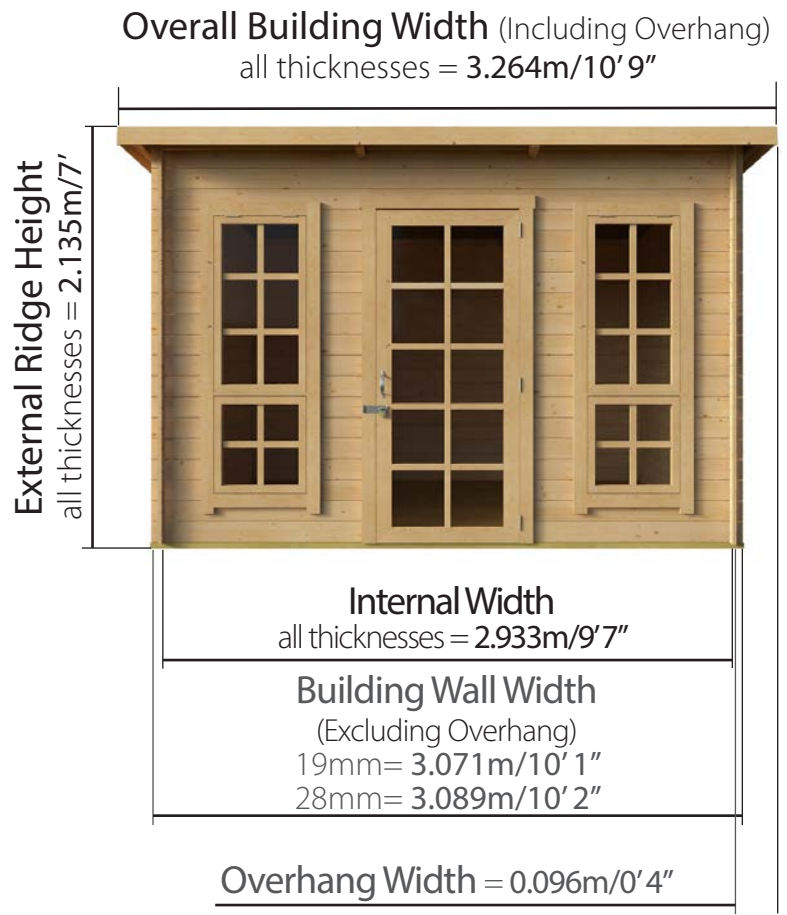


Please note: your base must be perfectly level and drainage is required to allow water to run off the surface. There must also be at least 2m clearance on each side to allow annual treatment to be applied.

D2.46m x W3.26m / D8'1" x W10'9"

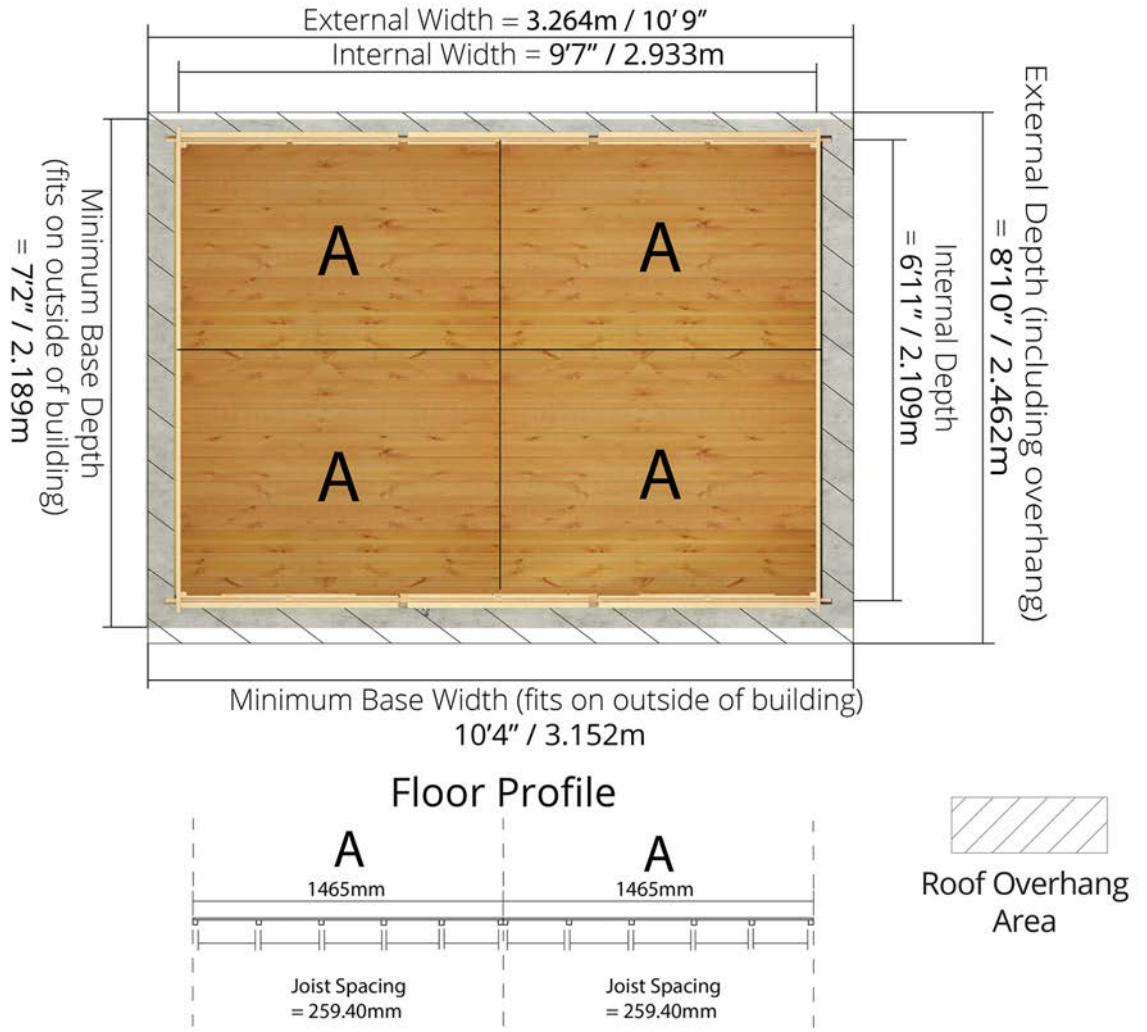
Interlocking Windowed Shed:

Front elevation



Front of Building

Floor Plan

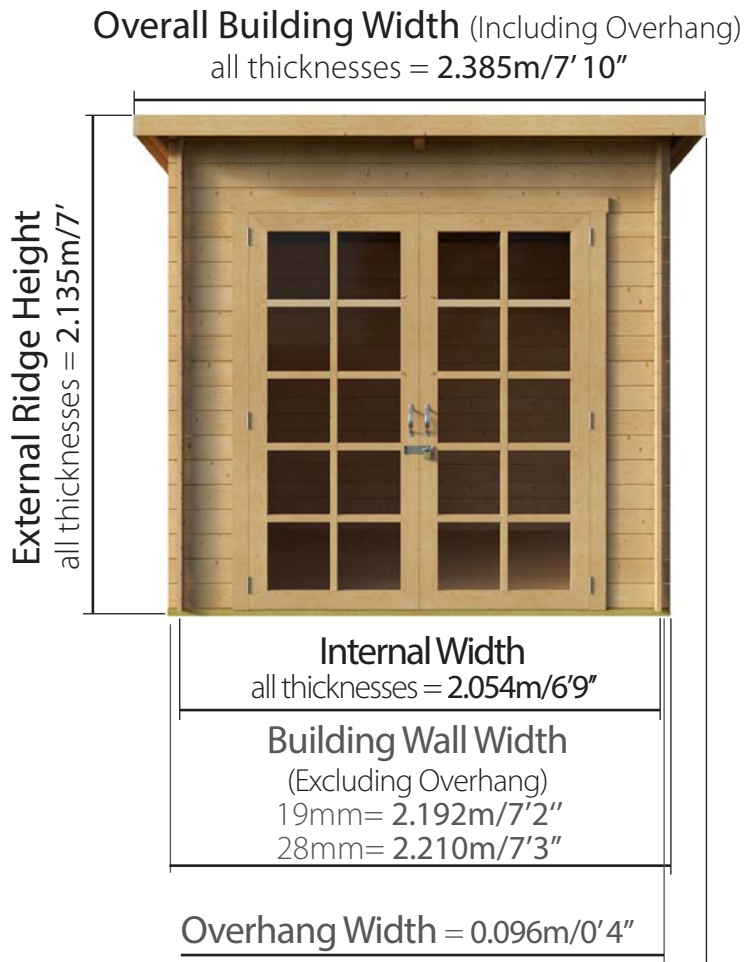


Please note: your base must be perfectly level and drainage is required to allow water to run off the surface. There must also be at least 2m clearance on each side to allow annual treatment to be applied.

D2.46m x W2.385m / D8'1" x W7'10"

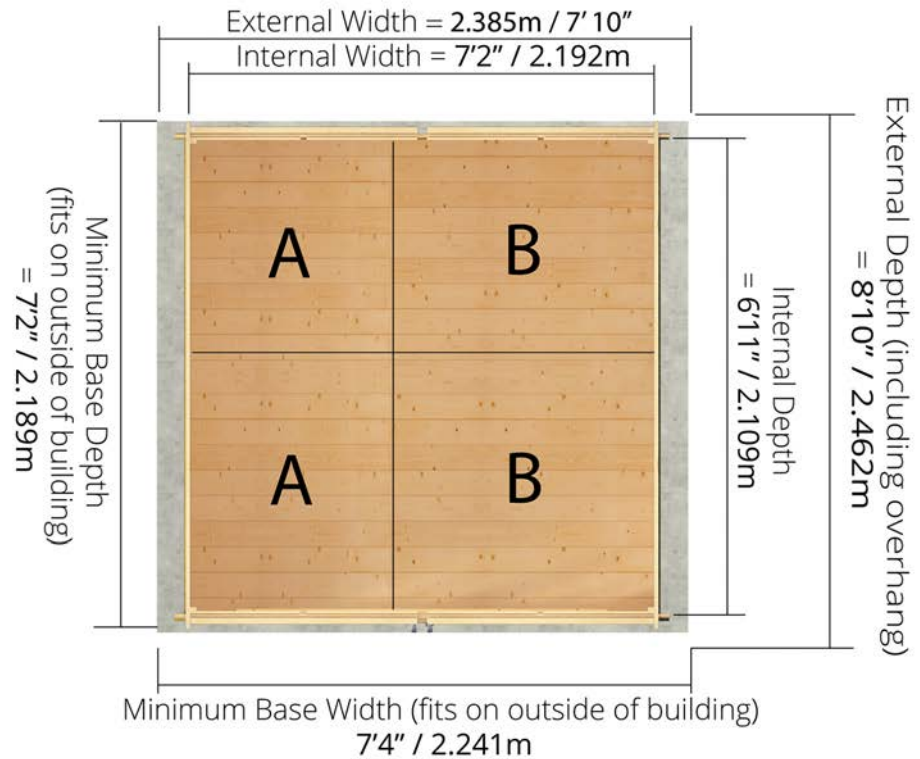
Interlocking Windowed Shed:

Front elevation

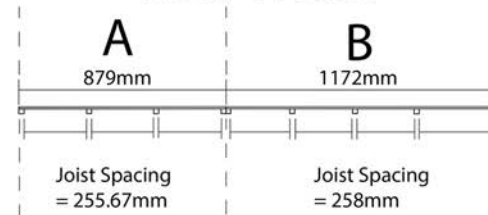


Front of Building

Floor Plan



Floor Profile



Please note: your base must be perfectly level and drainage is required to allow water to run off the surface. There must also be at least 2m clearance on each side to allow annual treatment to be applied.